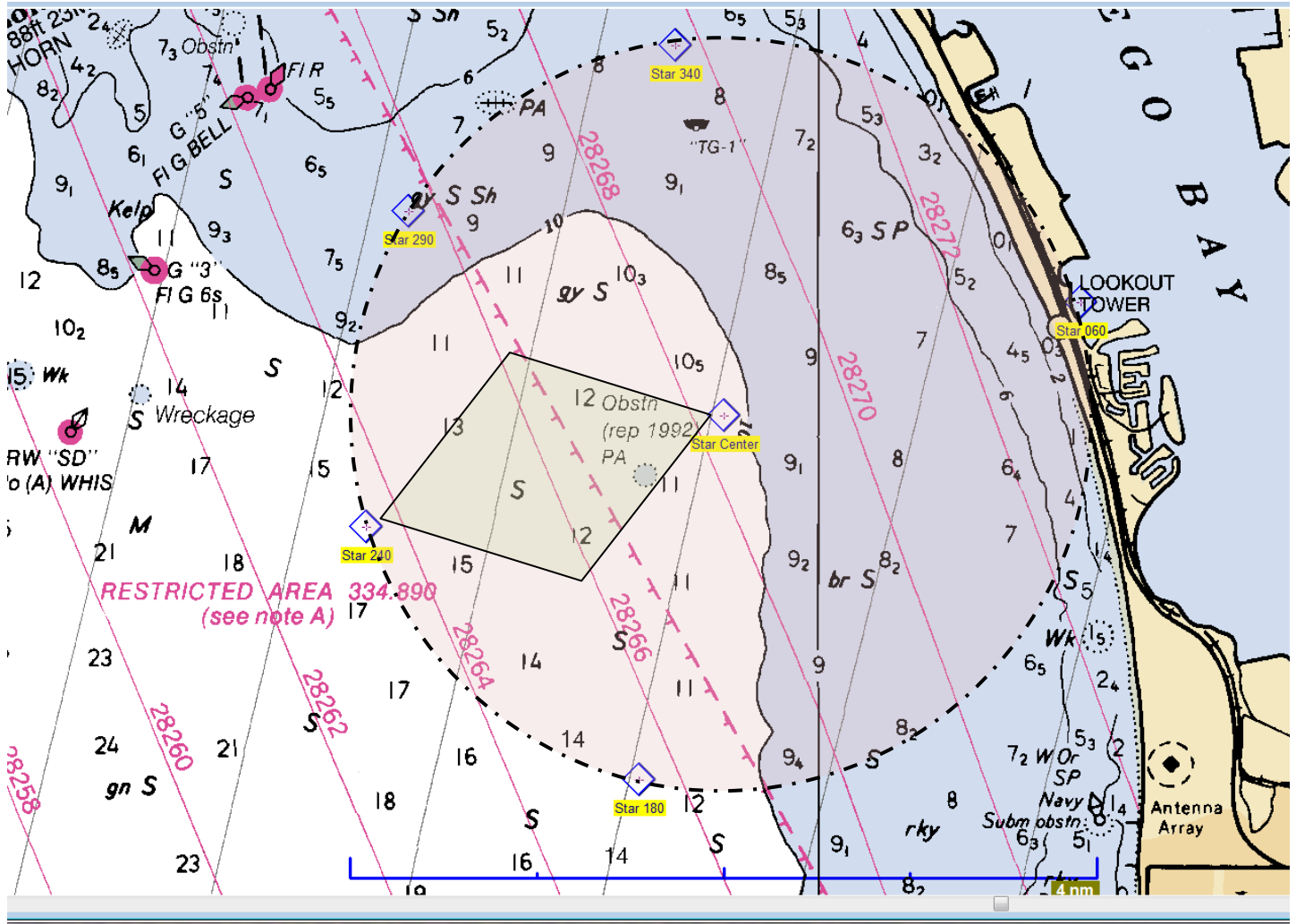


Star Worlds Course Area



Notes:

All distances are in nautical miles

Course area in light red is a 2 nautical mile radius around point "Star Center", located approx. 3.5 nautical miles bearing 125 from Zuniga Jetty "Z" (south (seaward) end of Zuniga Jetty).

Prevailing winds generally come from direction 180 to 290. Thus boats would sail from "Star Center" to a mark located along the outer radial and oriented to the prevailing wind. The green figure illustrates the course area for a "240" wind.

Latitude/Longitude

Star Center = 32 37.411, 117 10.594

Star 340 = 32 39.394, 117 10.901

Star 290 = 32 38.506, 117 12.592

Star 240 = 32 36.815, 117 12.861

Star 180 = 32 35.460, 117 11.132

Star 060 = 32 38.018, 117 08.333

For more information, contact Jeff Johnson, Regatta Manager – 619-933-9922 (cell) or 619-758-6310 (work)